



BacBrewing™ is a registered trademark owned by
energo' srl
Via Caseggiato n°252, cap 37050 Angiari -VR- Italy
Tel +39-345-2790948 Fax +39-0442-664546
VAT ID enabled VIES IT-03661820237



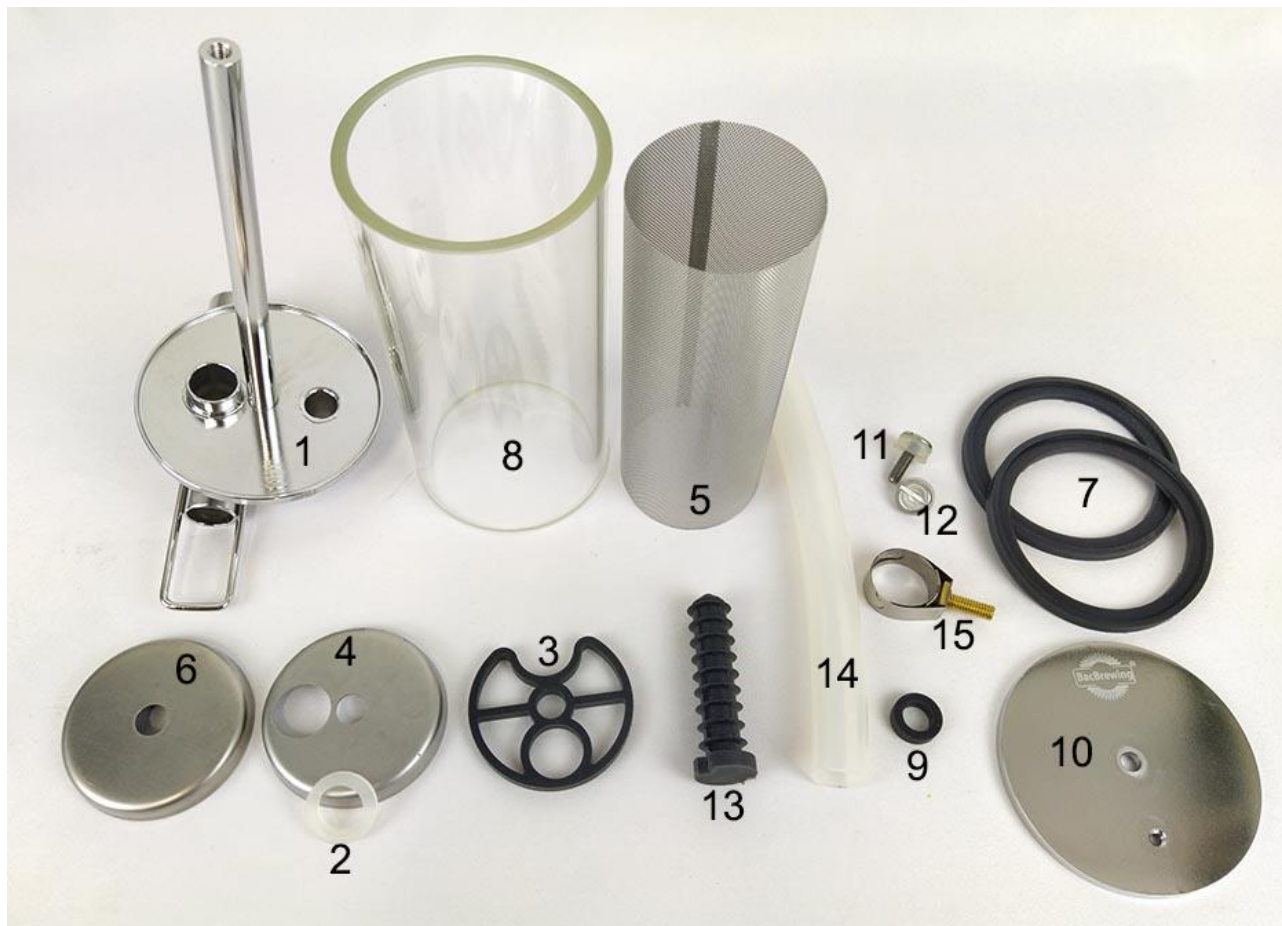
External filter for Grainfather



Instructions for use, assembly and disassembly

The new article BBGF004 BacBrewing "External filter for Grainfather" is supplied assembled and complete with every part necessary for its use.

The complete kit consists of the following parts



- 1- Central body
- 2- Tank seal
- 3- Shaped seal
- 4- Low filter bottom
- 5- Filter cylinder
- 6- High filter bottom
- 7- 2x Pyrex cylinder gasket
- 8- Pyrex cylinder
- 9- Filter presser
- 10- Filter cover
- 11- Union screw with gasket
- 12- Vent screw with gasket
- 13- Silicone valve open close
- 14- Filter-pump connection tube
- 15- Stainless steel hose-pump clamp

For its use, the original filter must not be mounted, only the bulkhead with which the central body of the external filter is mounted is recovered.

Before assembling the filter it is necessary to disassemble the current connection by following these steps.

1- Using a 13 mm wrench, unscrew the bulkhead from the tube

2- Move the black clamp towards the pump and holding the silicone sleeve firmly, rotate and pull the stainless steel tube.



3- Open the pump compartment by pressing and releasing the stainless steel casing,



4- Unscrew the screw that holds the vertical tube (hold the bracket tightly with the other hand otherwise you risk breaking the spots that join the bracket and the wall of the vat)

5- Move the black clamp towards the pump and holding the silicone sleeve firmly, rotate and pull the stainless steel tube upwards



6- Unscrew the two Phillips screws that hold the pump in place

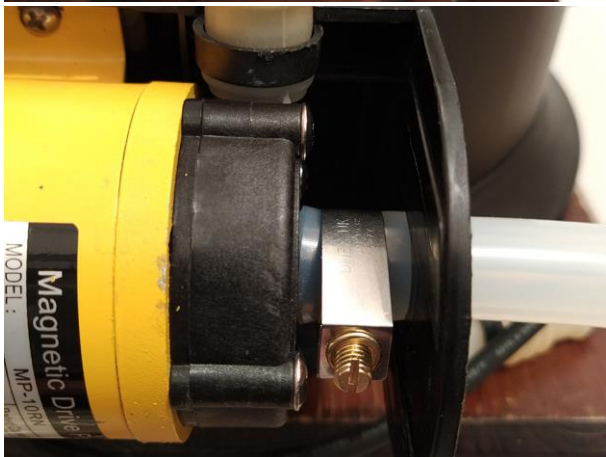
7- Slide the pump out of its housing, remove the silicone sleeve from the suction side



- 8- Position the stainless steel pipe-pump clamp (15) fully open around the pump suction pipe
- 9- Put the pump back in its seat, point the screws but do not tighten them.



- 10- Insert the filter-pump connection tube from the outside (14) and let it enter the pump suction tube up to the stop
- 11- Tighten the stainless steel hose-pump clamp (15), no need to over tighten



- 12- Lock the pump in place using the two screws
- 13- Lock the pump in its seat using the Reassemble the vertical delivery stainless steel pipe and the casing of the two screws pump

Assembly instructions for the external BacBrewing filter

- 1- Insert the original bulkhead from inside the vat without the original seal
- 2- Outside insert the vat gasket (2)
- 3- Screw the central body firmly vertically with the help of a 13 mm hex key from the inside



- 4- Insert the shaped gasket (3)



- 5- Insert the low filter bottom (4) and press to make the shaped gasket adhere well



- 6- Insert the filter cylinder (5) inside the base bottom



- 7- Insert the high filter bottom (6)



- 8- Place one of the two Pyrex cylinder seals (7) on the base of the central body



9- Insert the Pyrex cylinder (8) in the seal seat (7)



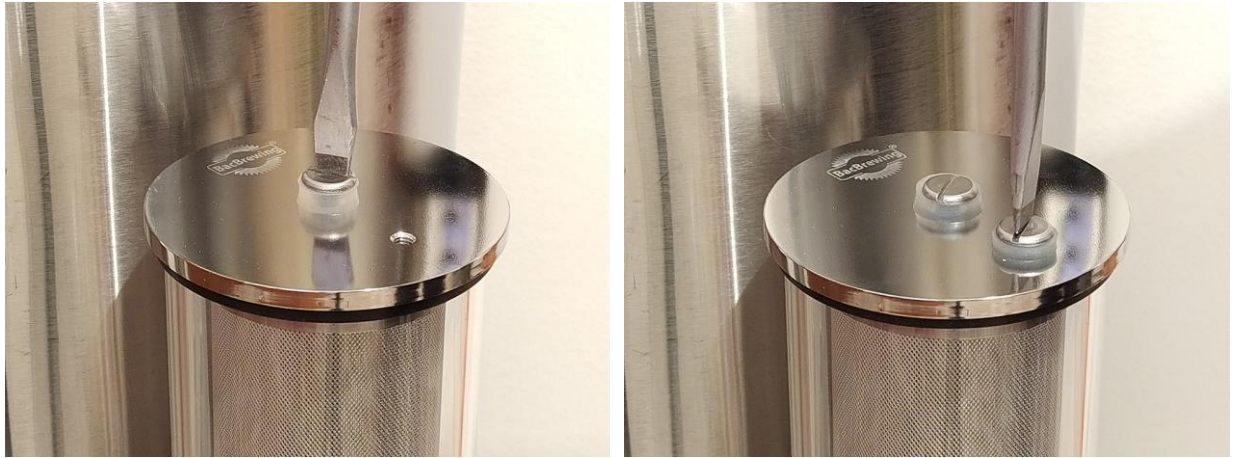
10- Place the filter presser (9) on the central shaft terminal



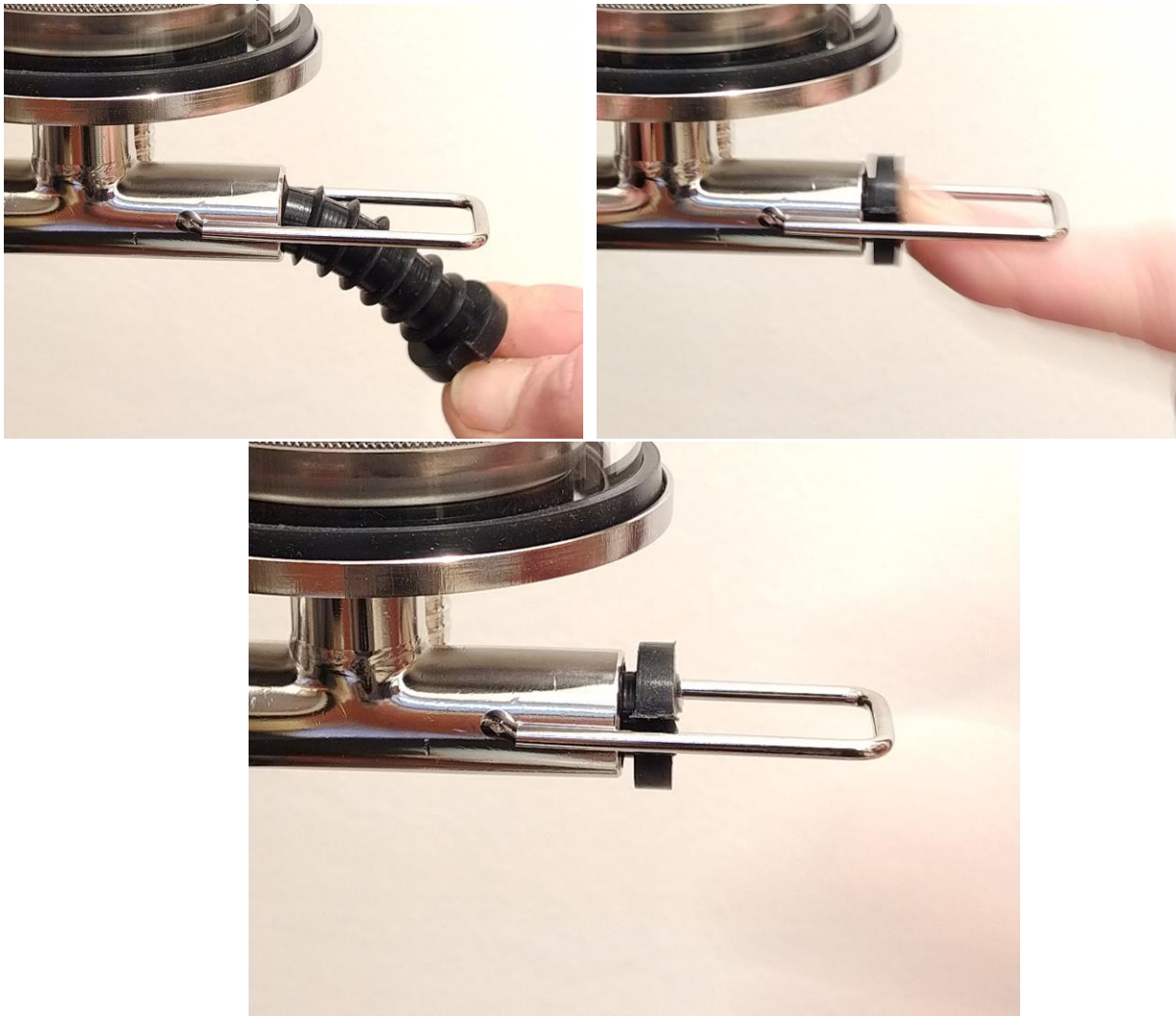
11- Place the second gasket (7) on the edge of the Pyrex cylinder



- 12- Position the filter cover (10) to close everything taking care not to move the filter presser from the center and not to move the gasket.
- 13- Using the union screw (11), join everything but without tightening. Before tightening the union screw, check that the Pyrex cylinder seals (7) are well positioned and not pinched. If everything is in order to tighten the union screw, there is no need to over tighten.
- 14- Screw the vent screw (12) to the filter cover (10)



- 15- Insert the open-close silicone valve (13) in the base tee pushing it up to the stop.
With the valve in this position the flow is closed



16- Join the silicone tube that arrives from the pump in the outlet hose connector of the central body, thanks to the tothing and the fact that this channel is in depression, it is not necessary to use a clamp



Assembly is complete and the filter is ready for use



Before turning on the pump, the filter must be activated as even if the vat is full, the filter is empty
To activate the filter, you need to perform these simple steps.

- 1- Open the silicone open-close valve (13) by pulling it outwards until it locks, useful to prevent it being carelessly pulled out completely with the must spilling
- 2- At this point you will see that although the valve is open, the must does not fill the filtering chamber, to make the filter activate unscrew the vent screw (12) a few turns so that the air comes out, in this way the must fills the filter chamber. When the must comes out of the vent screw, screw it on.
- 3- At this point the filter is activated, you can turn on the pump and proceed to make your beloved beer

Principle of operation

The coarse parts of the thrub are sucked in but once they enter the filter they are trapped in the internal volume of the filter cylinder.

Let us now assume that for some reason (assembly errors of the malt-pipe, leakage of the bottom disk gasket or other problems) the filter is filled with coarse details and that the flow decreases

Thanks to how this filter is shaped, **it can be cleaned during cooking without loss of must**

To disassemble and clean the filter with a full tank, carry out these simple steps

- 1- Leave the pump on and the outlet valve open
- 2- Close the open-close silicone valve (13) by pushing it against the tee
- 3- The flow stops
- 4- Open the vent screw (12)
- 5- The air being able to enter allows the outflow of **all the must present inside the filter**
- 6- When all the must has been sucked, close the outlet valve.
- 7- Turn off the pump
- 8- Unscrew the union screw (11)
- 9- Remove the cover, the Pyrex cylinder, the high gasket (7) and the filter presser (9)
- 10- Remove the filter cylinder keeping it compact between the bottoms. In this way all the dirt is extracted and kept compact.
- 11- Throw or put the contents back into the malt-pipe, wash the parts well and reassemble everything, checking that the gaskets and their seats are clean
- 12- Once everything is reassembled, open the silicone valve open-close by pulling it outwards until it stops, bleed to fill the filter
- 13- Once filled, open the outlet tap and turn on the pump. The filter returns to filter at 100% of its capacity and the flow returns total.